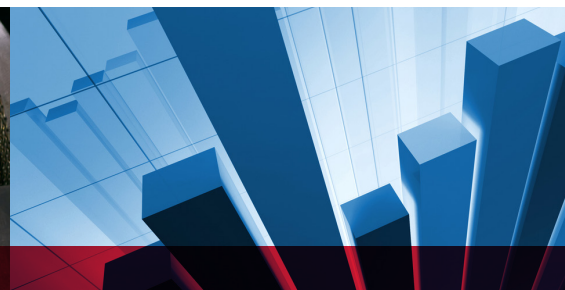
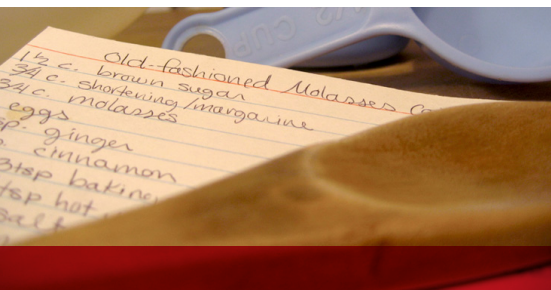


NATIONAL FOOD ENTREPRENEUR PROGRAM

at The Food Processing Center



Launched in 1989, the National Food Entrepreneur Program has helped thousands of entrepreneurs nationwide realize their dream of starting a food company. We can help you through all the steps of creating a food business and — perhaps most important — help you use your time wisely and avoid costly mistakes. The program begins with the one-day Recipe to Reality Seminar, followed by individualized consultation provided through Product to Profit.

An outstanding team of expert food scientists, food engineers and business consultants, combined with state-of-the-art facilities and equipment, allows The Food Processing Center to provide a broad spectrum of services and support to the food manufacturing industry. Fee-based assistance is customized to the client's needs and provided on a confidential basis.

RECIPE TO REALITY SEMINAR

The program begins with a one-day seminar that provides entrepreneurs with an overview of the issues crucial in developing a successful food manufacturing business. The seminar addresses topics that every entrepreneur should consider when making the decision to start a food business.

- Market Research & Selection
- Product & Process Development
- Packaging & Labeling
- Regulatory Agencies & Regulations
- Product Pricing
- Business Structure
- Food Safety & Sanitation
- Product Introduction & Sales
- Promotional Materials Package

The seminar is offered in person and on demand.

PRODUCT TO PROFIT

Following the seminar, entrepreneurs who decide to start their business can enter the Product to Profit phase of the program. Our team of experts will help you navigate every step of the way by providing comprehensive assistance tailored to your specific product and company goals.

Assistance includes:

- Business Development
- Product & Process Development
- Label & Package Development
- Regulatory Compliance
- Product Pricing
- Processing Facility Location
- Promotional Tools & Sales Strategy

FOOD PROCESSING CENTER SERVICE AREAS

- PILOT PLANTS
- SENSORY ANALYSIS
- APPLIED RESEARCH
- LABORATORY SERVICES
- PRODUCT & PROCESS DEVELOPMENT
- LABELING & REGULATORY COMPLIANCE
- ▶ **NATIONAL FOOD ENTREPRENEUR PROGRAM**
- PROFESSIONAL DEVELOPMENT OPPORTUNITIES
- CHEMICAL LABORATORY SERVICES
- DAIRY PLANT

continued on back

I have a great idea for a food business.



Where do I start?

The National Food Entrepreneur Program can help resource providers answer that question.

- **Do you have entrepreneurs in your community who would like to start food manufacturing companies?**
- **Do existing small food manufacturers seek specific food-related business assistance from you?**
- **Would you like a resource that would provide entrepreneurs with everything they need to start a food business?**

If you answered yes to any or all of these questions, please refer these companies to the National Food Entrepreneur Program or consider bringing the program to the entrepreneurs in your community or state. Organizations and agencies from throughout the country can contract with The Food Processing Center to provide the program to their entrepreneurs. This is an efficient and cost-effective method to provide assistance and to reap the economic impact of new business growth. Please contact the program manager to discuss available options in more detail.

FOR MORE INFO, CONTACT

Bethany Jackson
Senior Product Developer

The Food Processing Center
University of Nebraska
1901 North 21 Street
PO Box 886206
Lincoln, NE 68588-6206

Phone: 402-472-8917
Email: bjackson4@unl.edu



Learn more at **fpc.unl.edu**



[fpc.unl](https://www.facebook.com/fpc.unl)



[fpc_unl](https://twitter.com/fpc_unl)



[fpcnebraska](https://www.instagram.com/fpcnebraska)

UNL does not discriminate based upon any protected status. Please see go.unl.edu/nondiscrimination.

**FOOD
FROM
THOUGHT**

N
IANR